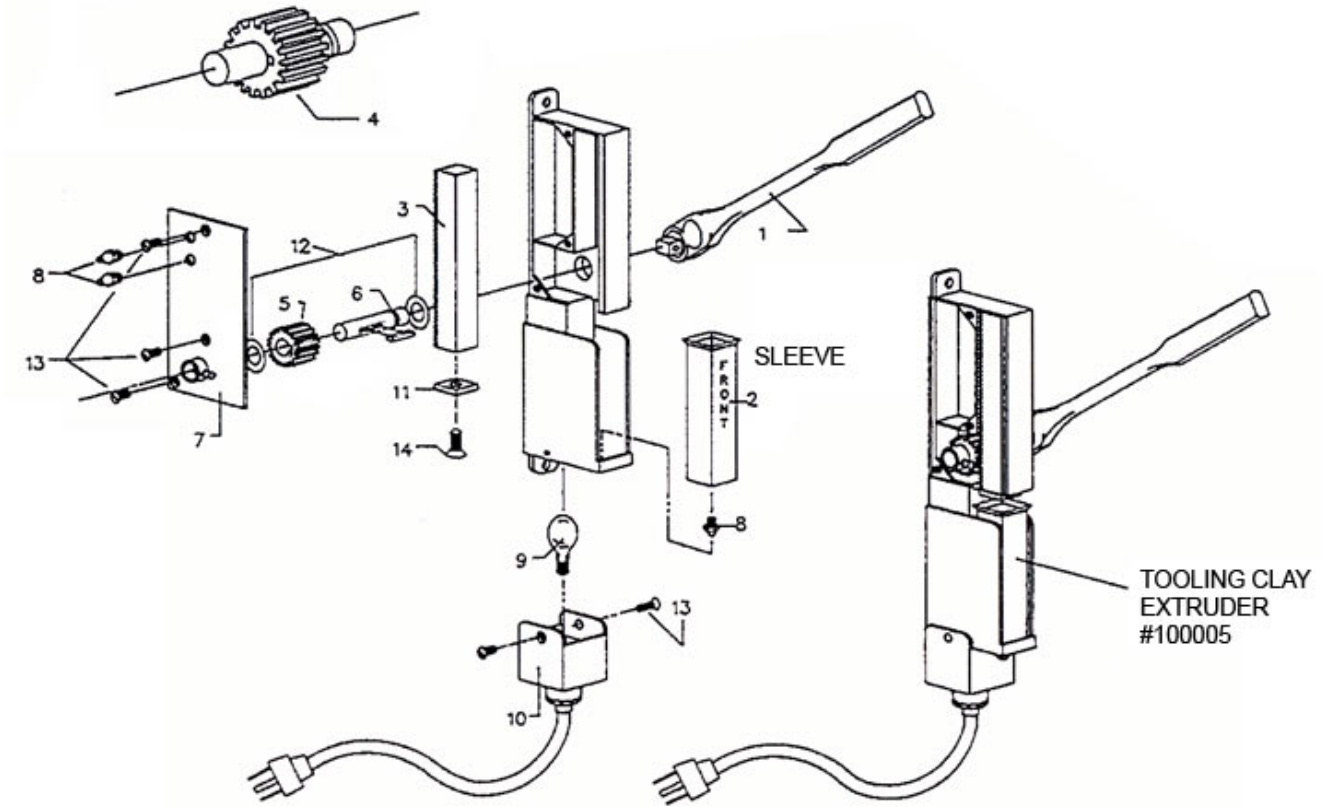


Manual Clay Extruder - Replacement Parts

Manual Clay Extruders include a variety of parts that may wear over time with continued use, and may require replacement. The following assembly diagram identifies those items.



Note: The Chrome Clay Cylinder from the Pneumatic Extruder will NOT fit on the manual Clay Extruder.

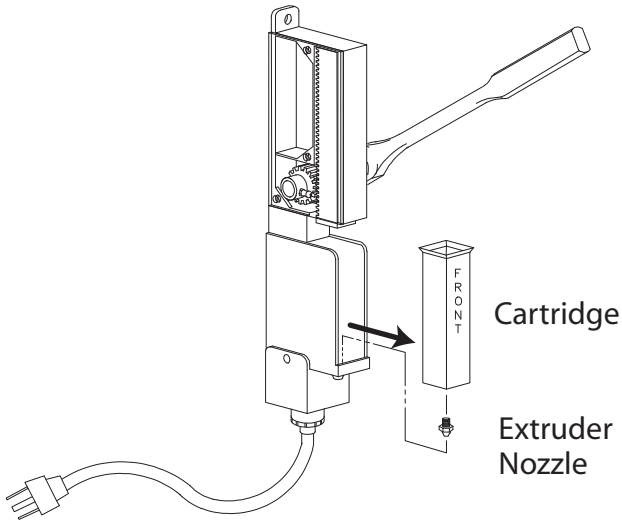
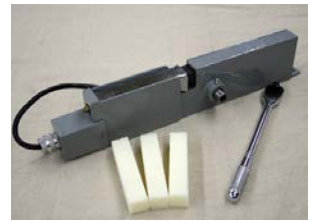
Parts List

Diagram Reference #	Part Number	Description	Quantity
1	100006	Long Handle Ratchet	1
2	100007	Chrome Clay Cylinder	1
3	100008	Rack Gear	1
4	100009	Pinion Gear/Shaft Assembly	1
5	100010	Pinion Gear	1
6	1000100	Pinion Gear Shaft with Key	1
7	100011	Side Plate / Rack and Pinion	1
8	100012	Clay Nozzles (3) - 1/8", 3/16", 1/4"	3
9	100013	Light Bulb	1
10	100014	Socket/Cord Assembly	1
11	100015	Polyethylene Scraper	1
12	100016	Teflon Washers (2)	2
13	1000160	Screws for Side Plate and Light Socket (5) 10 - 24 x 1/2" Flat Head Machine Screws	5
14	1000161	Screw for Polyethylene Scraper (1) 1/4" - 20 x 1/2" Flat Head Machine Screw	1

Operating Instructions

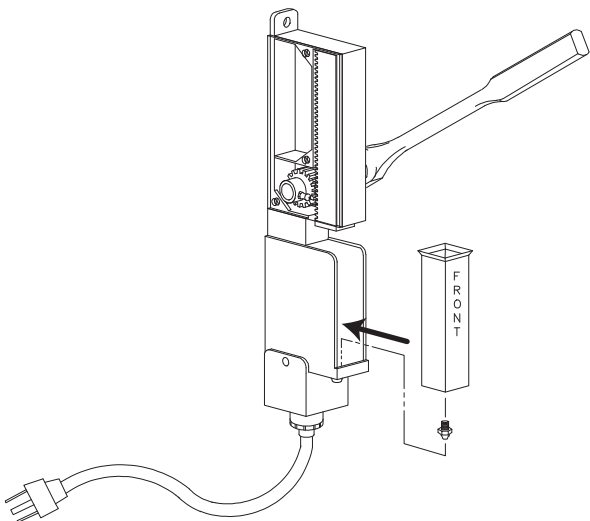
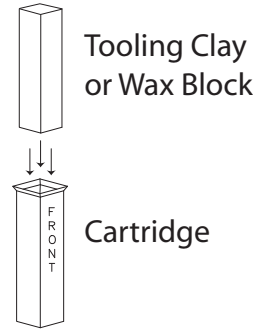
Manually Operated Clay Extruder

Order Number #100005



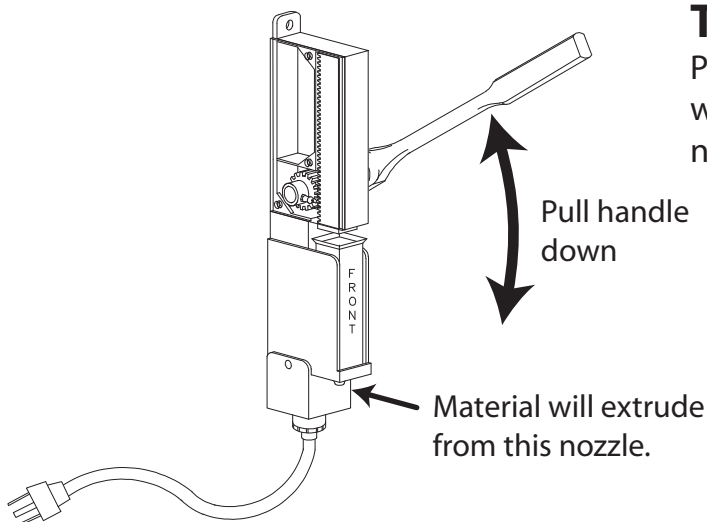
Loading Tooling Clay or Wax into Extruder:

Lift handle all the way up.
Lift up Cartridge (shown at left),
and pull out of unit.
Check Extruder Nozzle to
ensure it is not clogged
with dried material.
Take a fresh block of tooling
clay or tooling wax, and insert
it into the cartridge (shown
at right).



Reload Extruder:

Reverse the removal process to install the cartridge
into the Extruder.



To Extrude Clay or Wax:

Pull down on the handle. As you pull down, clay or
wax material will be extruded from the extruder
nozzle.