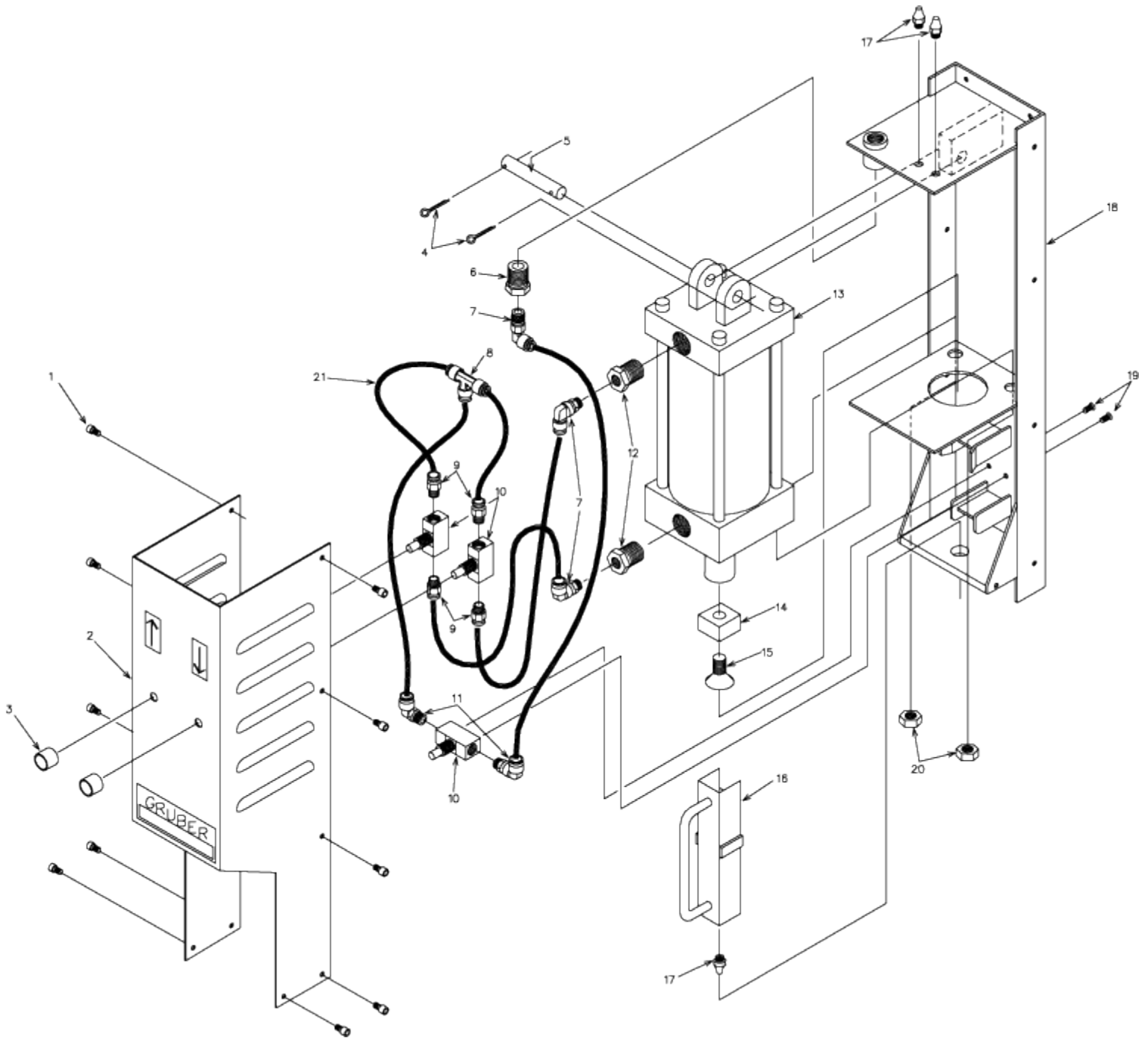


Pneumatic Clay Extruder - Replacement Parts

Pneumatic Clay Extruders include a variety of parts that may wear over time with continued use, and may require replacement. The following assembly diagram identifies those items.



Note: The Chrome Clay Cylinder from the Pneumatic Extruder will NOT fit on the Manual Clay Extruder.

Parts List

Drawing Reference Number	Part Number	Description	Quantity
1	1000210	10-24 x 1/2 Stainless Steel Socket Head Cap Screws	10
2	100020	Sheet Metal Cover	1
3		Control Valve Knob (included with valve)	2
4	1000211	1/8 x 1" Cotter Pin	2
5	1000212	Cylinder Pin 3/4" x 3"	1
6	0831736	#209 P-8-4 (1/4" x 1/2" Bushing)	1
7	1103111	Elbow 169P-4-4	3
8	100024	Tee 164P-4	1
9	1103112	Male Connector 68PL-4-2	4
10	100019	ARO 224C Push Button Valve	3
11	100025	Elbow 169PL-4-2	2
12	100030	209P-12-4 (1/4" x 3/4" Bushing)	2
13	100018	E.C.M. 4" x 6" Cylinder (Replacement Parts are available for this item)	1
14	100021	Teflon Scraper	1
15	1000213	7/16-20 x 1-3/4" F.H. Socket Head Cap Screw	1
16	1000214	Chrome Clay Cylinder (with integral handle)	1
17	100012	Extruder Nozzles - 1/8", 3/16", 1/4" (1 each for set of 3 pieces)	1
18	N/A	Main Frame	1
19		6-32 X 1/2" Phillips Head Screws (included with Valve)	2
20	N/A	3/8" - 24 Hex Nut	2
21	100026	1/4" Poly Flex Tube	1



www.gruber-systems.com

Gruber Systems, Inc.

29083 The Old Road Valencia, CA 91355 U.S.A.

Tel: +1 (661) 257-4060