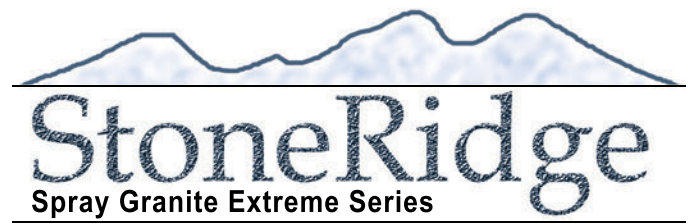


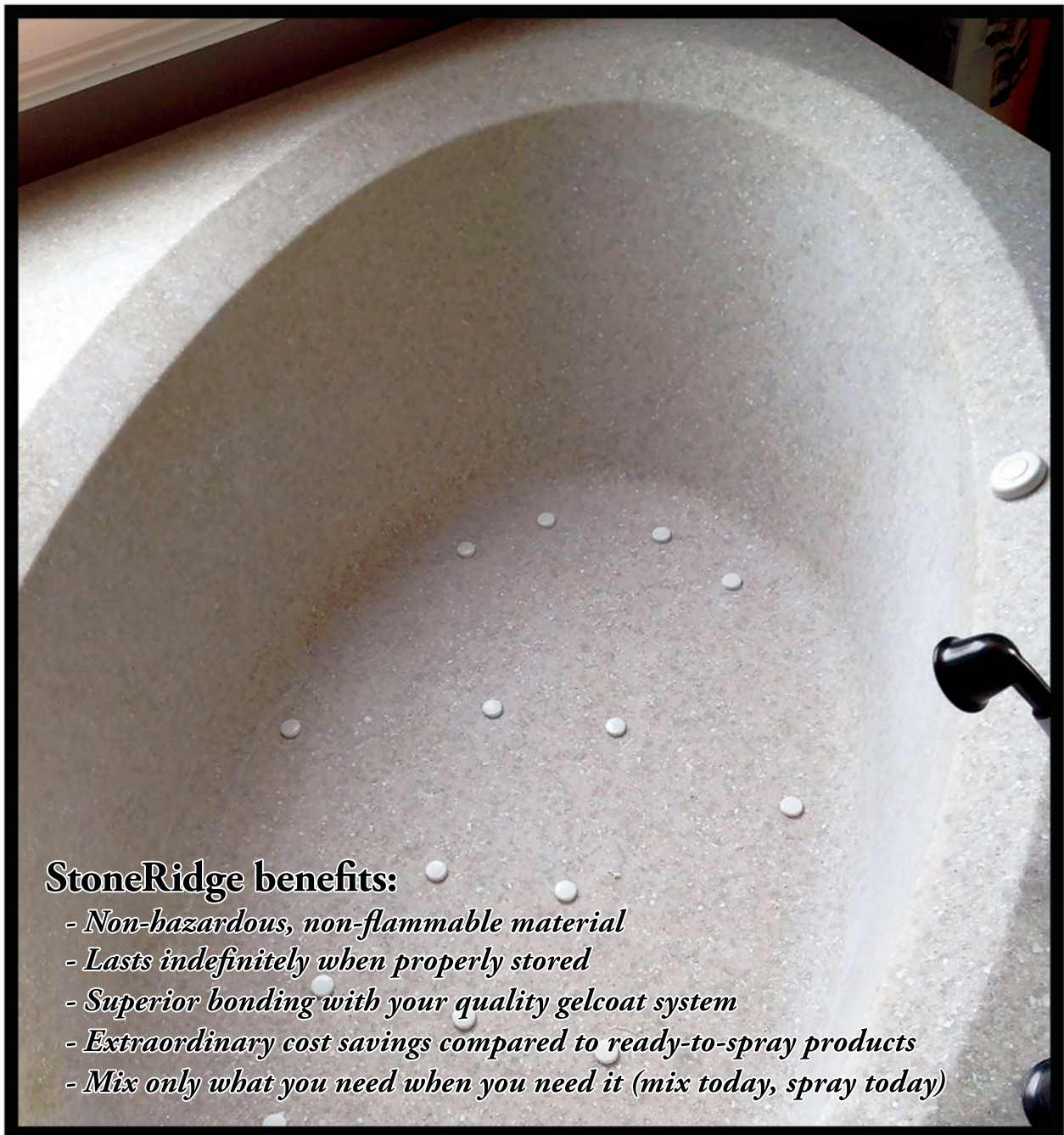


THE R.J.
MARSHALL
COMPANY



Sprayable Granite Effect Filler

Spray Granite Extreme (SGE) incorporates large hylite chips to create a more chunky appearance similar to engineered stone or natural granite. SGE is designed to be used in cast polymer and fiberglass reinforced plastic applications. SGE builds opacity quickly and was developed to be sprayed at 30 - 40 mils thick wet behind a clear gelcoat or against the mold as a primary wear surface.



StoneRidge benefits:

- *Non-hazardous, non-flammable material*
- *Lasts indefinitely when properly stored*
- *Superior bonding with your quality gelcoat system*
- *Extraordinary cost savings compared to ready-to-spray products*
- *Mix only what you need when you need it (mix today, spray today)*

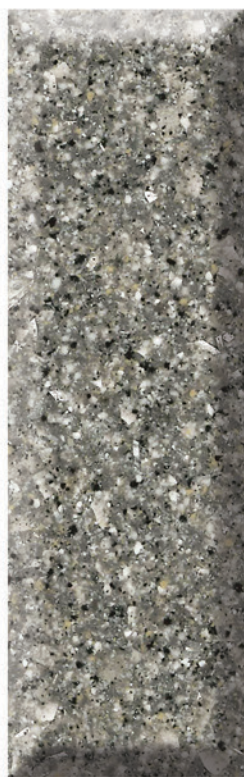
Large aggregate look of Engineered Stone or Natural Granite.



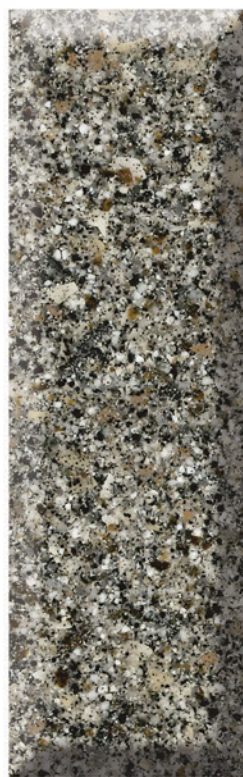
NEW Avalanche
SGE 221



NEW Lustre
SGE 256*



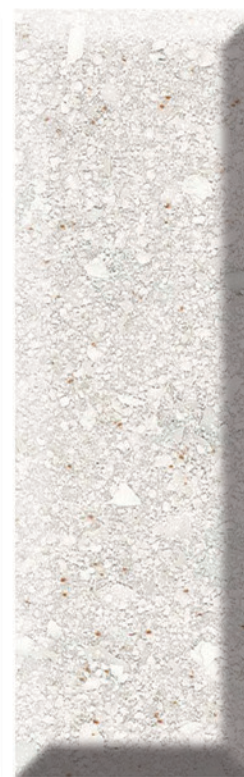
NEW Agate
SGE 275*



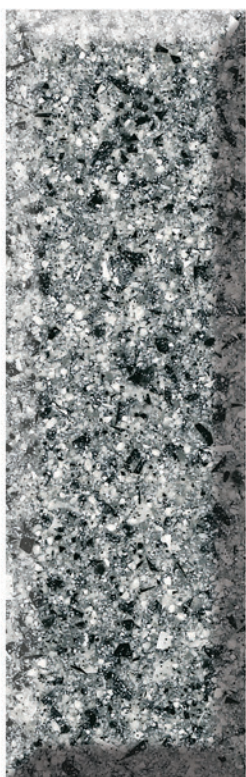
NEW Magnetite
SGE 313



Snow Drift
SGE 213



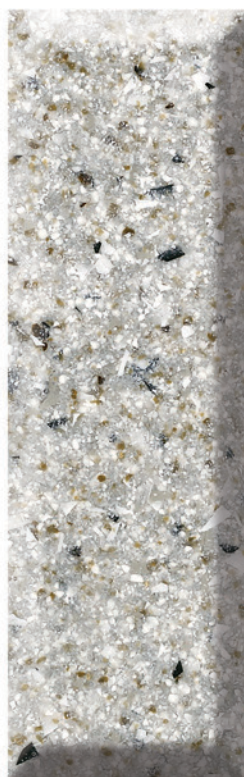
Cotton Wood
SGE 217



Madrid
SGE 279



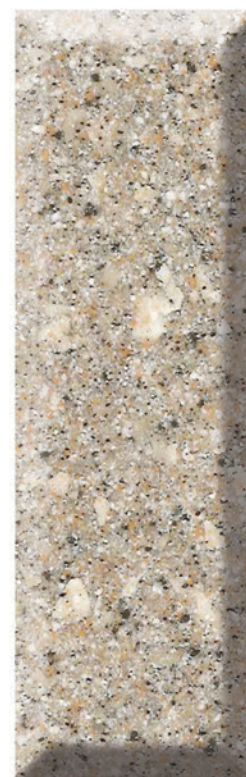
Empire
SGE 285*



Boreal
SGE 298



Latte
SGE 311*



Clam Shell
SGE 317



Quarry
SGE 332*

Actual color and granule size will vary. Final product determination must be based on your resin and process.



Our granules are manufactured under The R.J. Marshall exclusive patent and contain up to 22% post industrial recycled content.



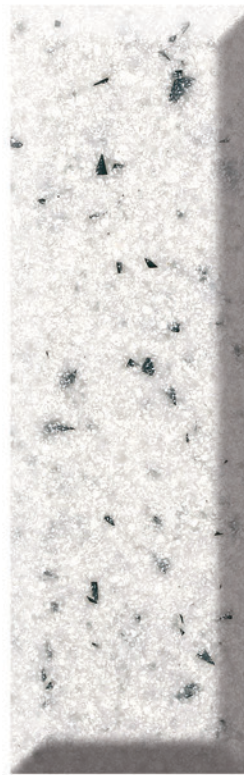
Everest
SGE 218*



Arcadia
SGE 222*



Frost
SGE 225*



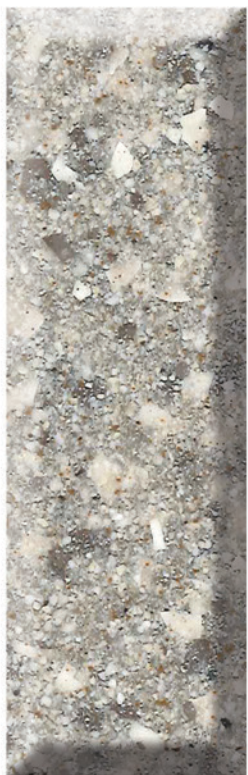
Gala
SGE 231*



Boulder
SGE 245



Moonscape
SGE 263



Rocky Trail
SGE 348



Bahama Sand
SGE 376



Chocolate Fudge
SGE 383*



Hazelnut
SGE 386



Milky Way
SGE 425



Mercury
SGE 475*

** Features a reflective additive.*

Suggestions For Use

Equipment - Spray Granite Extreme can be effectively applied with a cup gun and a #9 nozzle (9/32 inch orifice). For larger volume applications, a dry spray or a high volume wet spray system may be preferred. We suggest that molds be pre-wet with gelcoat before spraying these products through dry spray equipment to maximize transfer efficiency and minimize the chance for porosity on the surface of the part. If the spray equipment plugs: try a larger orifice, drill air intake hole larger on cup gun lid or add more gelcoat to the mix.

Filler/ Resin Ratio - We recommend tumbling the SGE dry material then scooping the material out of the bucket. SGE should be mixed carefully into a good quality, clear gelcoat with UV light stability at a typical ratio of about 60% gelcoat to 40% filler by weight. ****SGE 285 Empire will need as much as 70% gelcoat due to the increased amount of large hylite chips in this color. Mix ratios may vary based on the gelcoat used.*** It is essential that a gelcoat with a thixotropic index of 5 or higher be used to provide the proper thixotropic conditions to hold granules and hylite chips in place on vertical surfaces. The opacity of the matrix is provided by the SGE so the filler loading should remain as high as possible. The large hylite chips in SGE will become flexible in a wet mix allowing them to be sprayed through a #9 nozzle. If the granules bounce off the mold when you spray, the mix is too thick. If the granules sag or the granite layer does not become opaque the mix needs additional filler.

Catalyst Levels - The catalyst levels used should be based on recommendations from your gelcoat or catalyst supplier. If you are using a cup gun to spray the SGE you may want to consult your gelcoat manufacturer about the minimum catalyst levels to give you additional working time. Do not go below the minimum catalyst level your gelcoat manufacturer recommends.

Background Color/ Color Additives - Pigmentation can be used to alter the color of SGE. Also, a pigmented backpour matrix or gelcoat back coat that matches the SGE color is recommended for best color results. Note, a change in background color can have an effect on the final appearance of SGE products.

Spraying Technique & Overflows - Spray using multiple cross directional passes to ensure an even build-up and apply a total film thickness to 40- 50 mils wet or until the mold is covered to opacity. Avoid excess material build up in corner radiuses. Spraying under the overflows is particularly difficult. Make sure that extra care is taken to get good coverage in that area.

Backsplashes - The granules will stop the backsplashes from closing tightly. Make sure the area where the backsplash door fits up against the mold is well taped before spraying. Remove the tape and all granules that might stop a snug fit before closing the backsplash door.

Thermal Cycling - SGE makes certified cast polymer parts. For a superior product, use it behind gelcoat with 10% Prolite C700 in the backfill matrix or use one of our Prolite products to make a part that can surpass 1000 cycles.

Appearance can be altered with change in:

Catalyzation, backfill pigmentation, resin to filler ratio, and surface treatment.

If using less than a full bag, we suggest mixing material in the bag thoroughly before using. Material may segregate during shipping. Due to the translucent nature of these products, backfilling with any other material is not recommended. These suggestions are not meant to represent a guarantee.



toll free: 800-338-7900
customer care: 888-514-8600
www.Rjmarshall.com
salesinfo@rjmarshall.com

Ask about our
Quick Ship
program.



January 2023